

This Page Is Inserted by IFW Operations
and is not a part of the Official Record

BEST AVAILABLE IMAGES

Defective images within this document are accurate representations of the original documents submitted by the applicant.

Defects in the images may include (but are not limited to):

- BLACK BORDERS
- TEXT CUT OFF AT TOP, BOTTOM OR SIDES
- FADED TEXT
- ILLEGIBLE TEXT
- SKEWED/SLANTED IMAGES
- COLORED PHOTOS
- BLACK OR VERY BLACK AND WHITE DARK PHOTOS
- GRAY SCALE DOCUMENTS

IMAGES ARE BEST AVAILABLE COPY.

**As rescanning documents *will not* correct images,
please do not report the images to the
Image Problem Mailbox.**

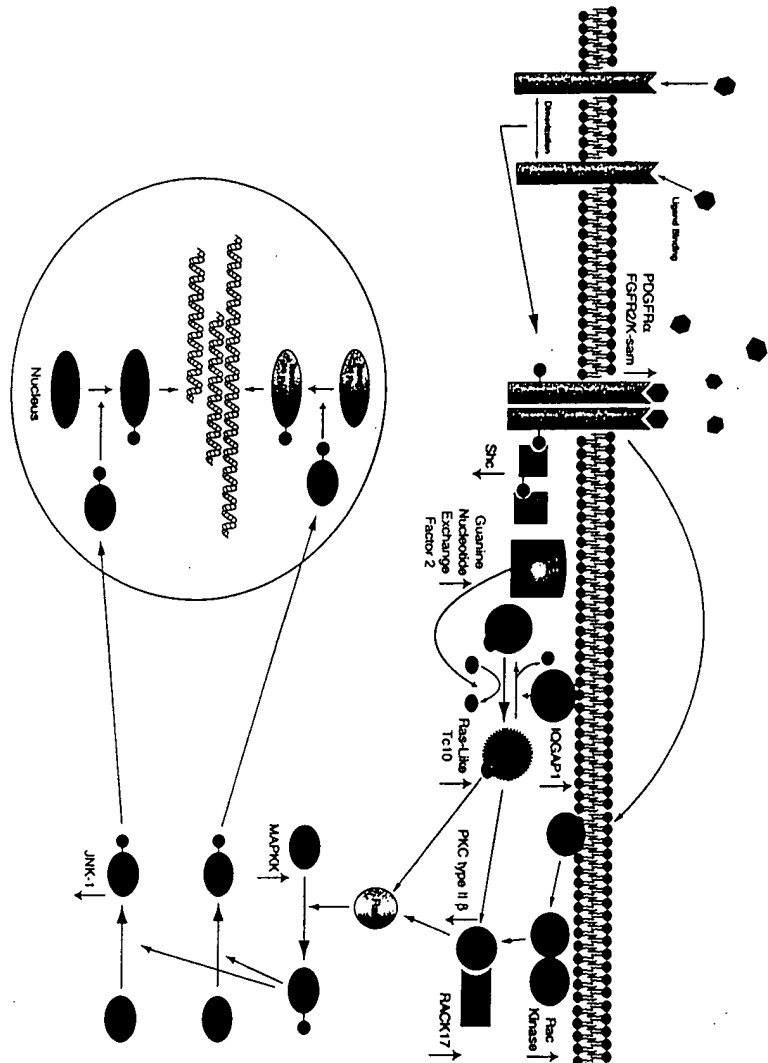
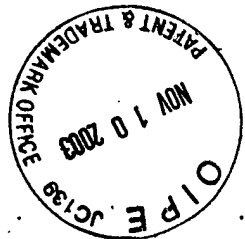
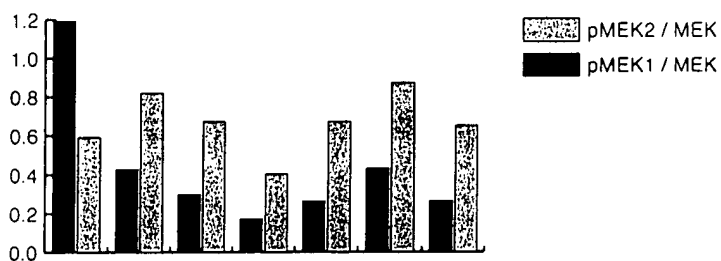
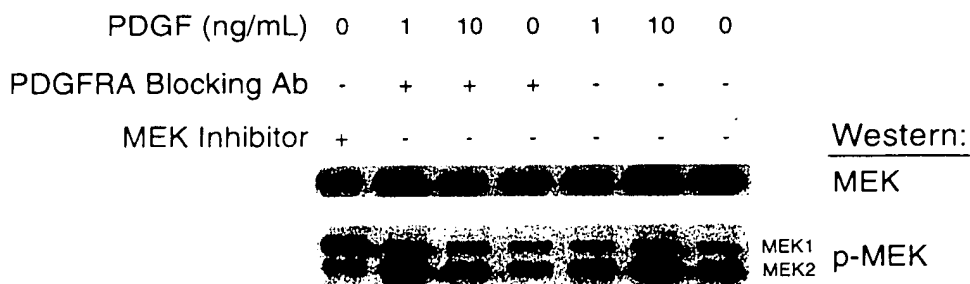


Fig. 1





a.



b.

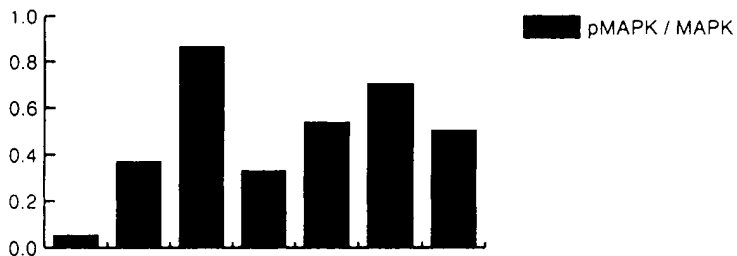
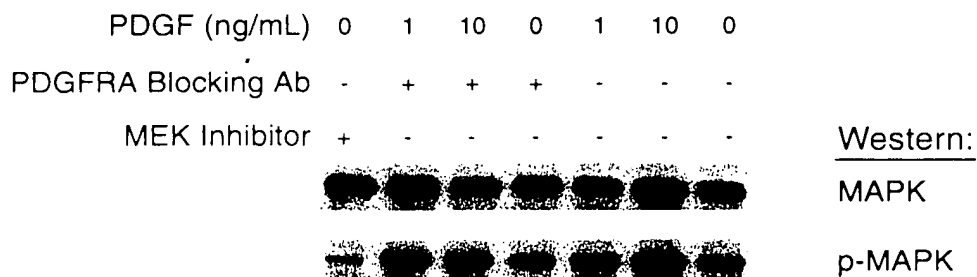


Fig. 2

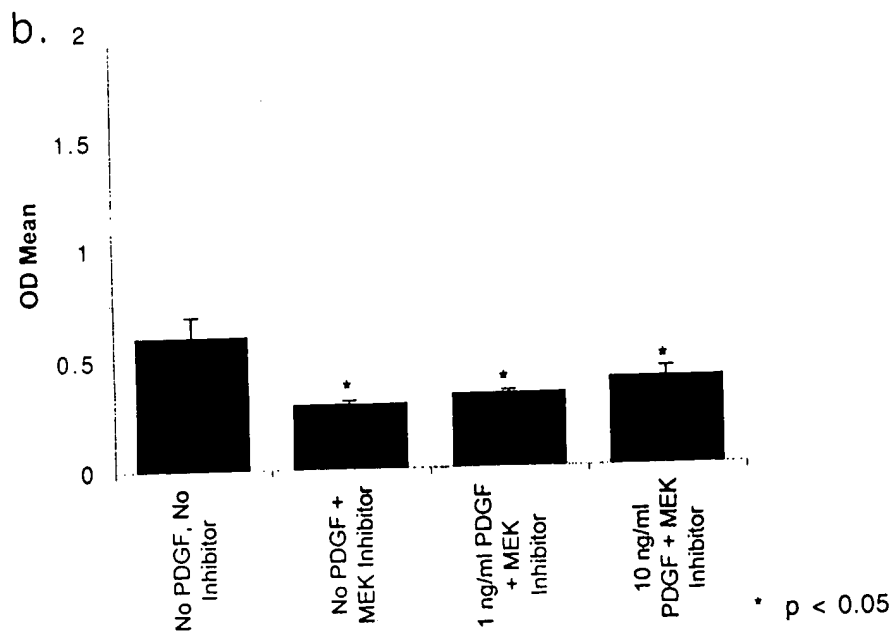
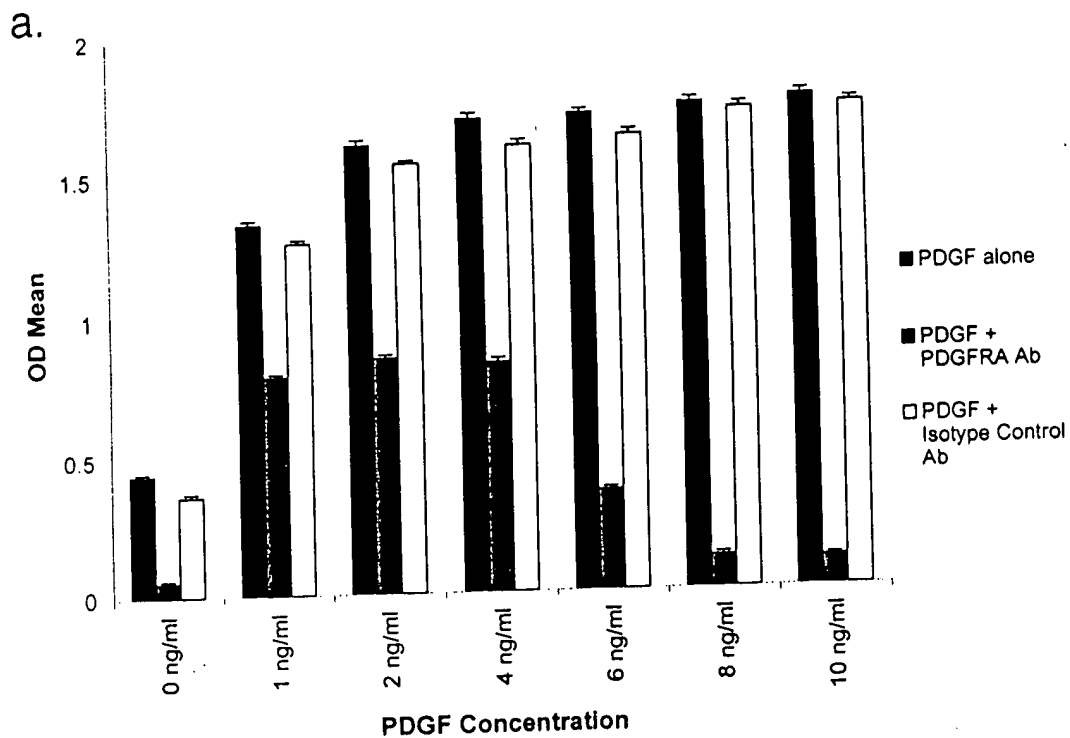
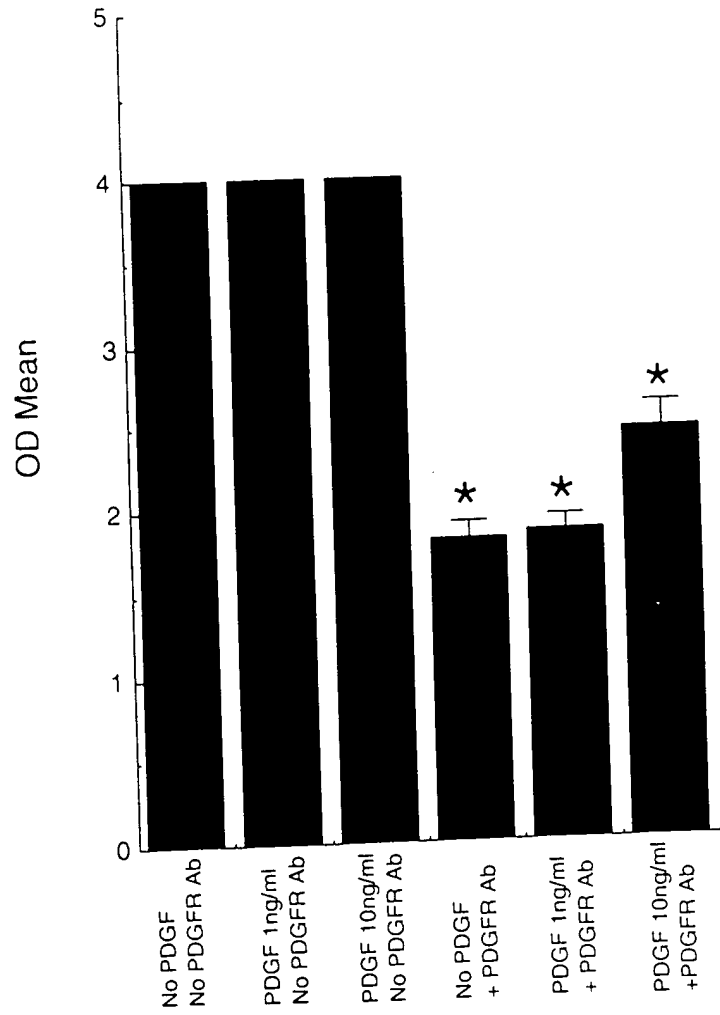


Fig. 3

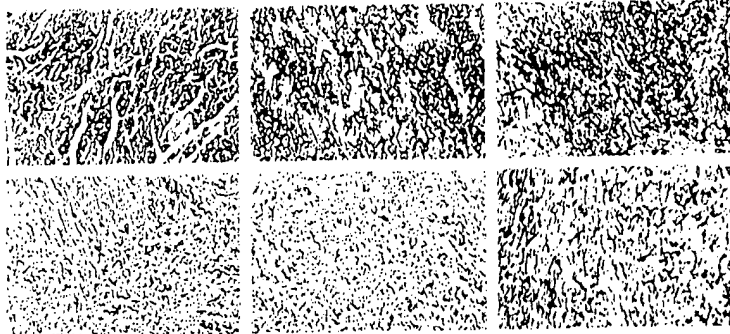


* p < 0.05

Fig. 4



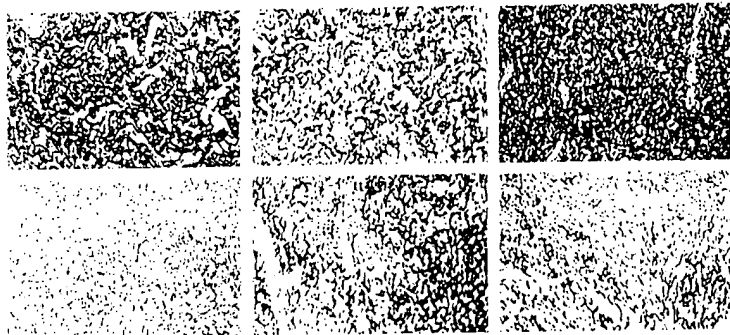
PCNA



Metastatic

Non-Metastatic

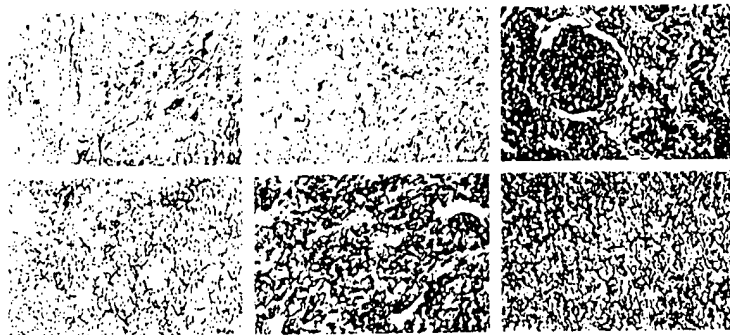
PDGFRA



Metastatic

Non-Metastatic

SPARC/Osteonectin



Metastatic

Non-Metastatic

Fig. 5

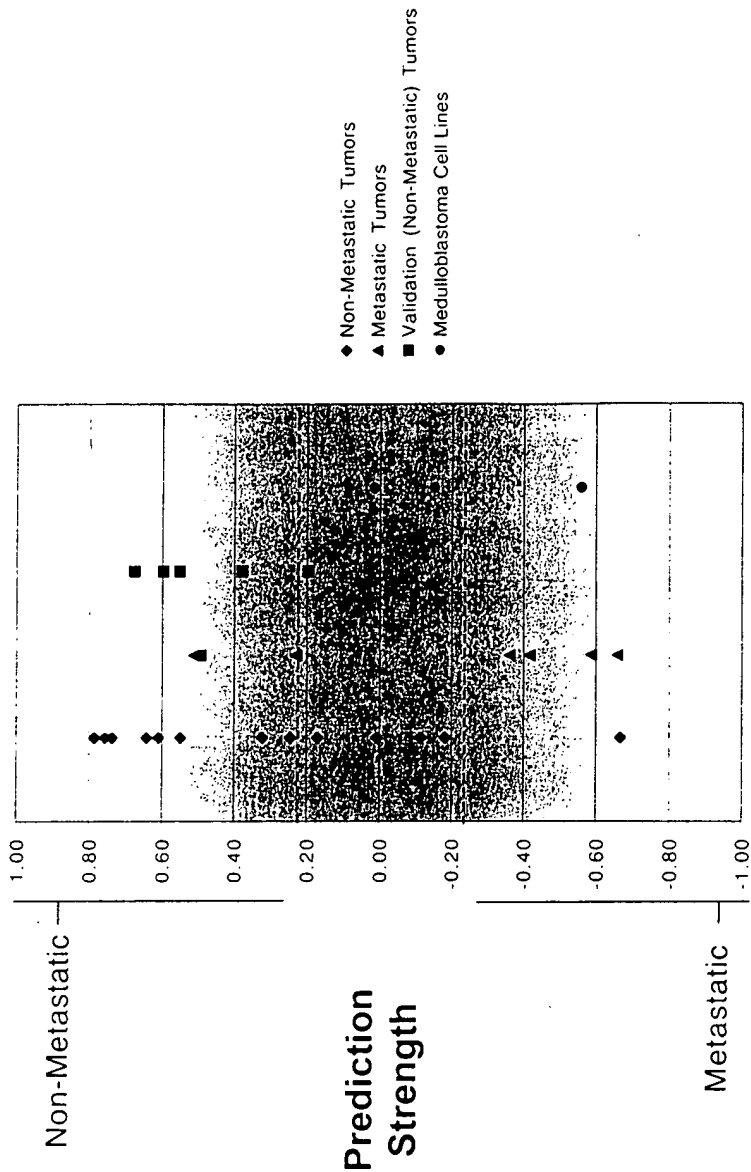


Fig. 6



Probe Set	Gene Name	Average Intensity, Non-Metastatic	Average Intensity, Metastatic	Permutational p-value	Average Fold Difference	
1937_at	Raihb10b10s1	3408	1864	0.004	1.80	
824_at	GTP-binding protein (RAB38)	134	23	0.008	5.83	
1811_at	Interleukin 17 (IL17)	111	38	0.007	2.88	
1848_at	Interleukin 10 (IL10)	381	171	0.007	2.22	
2043_at	e-mpo	117	58	0.010	2.04	
886_at	Integrin alpha-3 chain	807	377	0.018	1.71	
529_at	Human dual-specificity protein phosphatase	1308	640	0.018	2.06	
2070_at	Protein kinase (INK1)	241	71	0.024	3.42	
786_at	Nedd4-like ubiquitin-protein ligase WWP2	273	107	0.025	2.54	
1812_at	APC	1367	518	0.025	2.66	
304_at	Guanine Nucleotide Exchange Factor 2	67	19	0.036	4.86	
443_at	Nuclear factor 1 B3	3387	1864	0.036	2.04	
1360_at	Keratinocyte growth factor	239	140	0.036	1.71	
1600_at	Tyrosine kinase (TQO)	322	183	0.037	1.78	
684_at	MX1	3284	1818	0.037	1.80	
1447_at	Epidermal growth factor receptor kinase substrate (Eps8)	80	471	0.037	1.04	
1127_at	Ribosomal protein S8 kinase 2 (RPS8K2)	857	368	0.040	2.33	
2046_at	Erg protein (overexposed gene), 2' form	718	366	0.044	1.97	
2022_at	Rac protein kinase beta	128	80	0.046	1.59	
528_at	Heat shock protein 27 (HSP27)	489	288	0.046	1.68	
547_at	TNFR-1/NF-kappaB1/Rel1 type I transcription factor homolog	314	11	0.047	28.22	
1218_at	Protein kinase C (PKC) type beta II	182	32	0.048	5.01	
1012_at	p300/CBP-associated factor (P/CAF)	130	58	0.048	1.82	
1811_at	p62 and p64 isoform of N-Bcl2	886	470	0.048	1.48	Down
798_at	Chorionic Somatomammotropin Hormone Cc-4	757	437	0.048	1.73	In M+
138_at	Quarylate kinase associated protein (QKAP)	63	28	0.050	2.56	
208_at	Homeobox 1.4	18	213	0.055	12.10	Up In M+
828_at	Glucoamylase B-transferase-P16	2882	1148	0.055	2.49	
528_at	Cathepsin D (catD)	2288	808	0.051	2.11	
682_at	Replication protein A 140Da subunit (RPA)	790	1830	0.053	1.84	
1882_at	Tissue inhibitor of metalloproteinases (TIMP1)	188	3186	0.054	20.14	
2082_at	MUC28	3368	11374	0.054	3.38	
181_at	Mucin (MUC8)	182	370	0.054	1.92	
881_at	Replication protein A 140Da subunit (RPA)	217	816	0.056	2.84	
871_at	APRIL/CD262	4166	8688	0.057	2.08	
1818_at	Ras-Like Protein Tc10	878	1318	0.057	2.28	
1741_at	Insulin-like growth factor binding protein-2	417	3012	0.058	4.83	
841_at	Protein kinase C-binding protein RACK17	78	447	0.058	5.18	
1321_at	Tumor-associated membrane protein homolog (TMP)	90	343	0.058	3.80	
1143_at	FGF Receptor 4-like, AL, Epitax 2	2401	3486	0.058	1.46	
179_at	Beta-tubulin gene, clone m40	3393	8071	0.010	1.48	
708_at	X74784cde receptor protein tyrosine kinase	80	408	0.012	5.10	
368_at	X74784cde receptor protein tyrosine kinase	358	780	0.012	2.18	
1001_at	Putative receptor tyrosine kinase (te)	281	748	0.013	2.67	
982_at	P1-Cdk6	568	847	0.013	1.52	
1082_at	NF-LA-beta	864	1413	0.013	1.64	
283_at	Ubiquitin cytochrome-c reductase core 1	2846	4256	0.013	1.81	
1064_at	Replication factor C, 37-kDa subunit	332	943	0.016	1.84	
770_at	Glucoamylase	874	1878	0.016	2.13	
317_at	D56486 Cysteine protease	813	1461	0.016	2.83	
1863_at	Tumor necrosis factor receptor	928	1876	0.017	1.81	
190_at	Mitogen induced nuclear orphan receptor (MINOR)	80	218	0.017	3.84	
1007_at	Receptor tyrosine kinase DDR	1758	2943	0.018	1.67	
1808_at	Receptor protein-tyrosine kinase (HEK8)	120	787	0.018	6.42	
928_at	Gamma-interferon-inducible protein (IP-30)	787	1340	0.019	1.78	
1844_at	Bloom's syndrome protein (BLM)	443	886	0.019	1.87	
218_at	Homeobox protein (HOX7)	10	277	0.019	27.71	
1137_at	Lukemia virus receptor 2 (GLYFR2)	370	819	0.019	3.03	
605_at	RNA polymerase II subunit (p48P510)	1774	2886	0.021	1.63	
1306_at	Cytochrome P-450L7B	368	841	0.023	1.78	
1470_at	DNA polymerase delta small subunit	577	1444	0.023	2.50	
1198_at	RFC1 isoform7-14	820	837	0.023	2.80	
814_at	Homeobox protein (HOX7)	1884	2817	0.023	3.04	
1782_at	Oncoprotein 18 (Op18)	3241	4688	0.023	1.44	
736_at	Protein Kinase M31, Camp-Dependent	11	129	0.023	18.03	
828_at	(clone 14Y8) metallothionein-III (MT10)	218	648	0.023	2.97	
428_at	mRNA ligase for beta-3 microglobulin	818	9473	0.023	1.82	
811_at	Flavonoid, AL, Epitax 1	641	2028	0.020	3.70	
1228_at	THF-alpha converting enzyme	183	308	0.021	1.67	
1771_at	Platelet-derived growth factor receptor alpha	382	821	0.022	1.82	
1846_at	X73084cde NAC23-H1	4198	8870	0.023	1.88	
1828_at	Rac GTPase-activating-like protein (GAGAP1)	368	842	0.024	1.88	
1837_at	MAPKAP kinase (p38)	67	172	0.026	2.56	
608_at	Metallothionein I-B	3146	4404	0.026	1.40	
1970_at	FGFR2	274	881	0.027	2.48	
1978_at	M88371 Protein tyrosine kinase	346	782	0.027	2.18	
2068_at	Integrin beta-4 subunit	630	1046	0.028	1.86	
1939_at	Phosphoprotein p63	446	832	0.040	2.08	
1104_at	Heat shock protein (hsp 70)	1983	4117	0.042	2.07	
132_at	Cathepsin C	442	783	0.043	1.78	
8024_at	Lyn B	63	257	0.044	4.02	
702_at	Homeobox Protein Hpx-6	344	818	0.044	1.81	
882_at	Tumor antigen (L8)	63	179	0.044	2.88	
1771_at	Mxd2	803	1070	0.046	1.78	
841_at	Mxator gene (M4SH42)	721	1067	0.046	1.47	
2048_at	Alpha1(E)-catenin	2487	3607	0.046	1.42	

Fig. 7